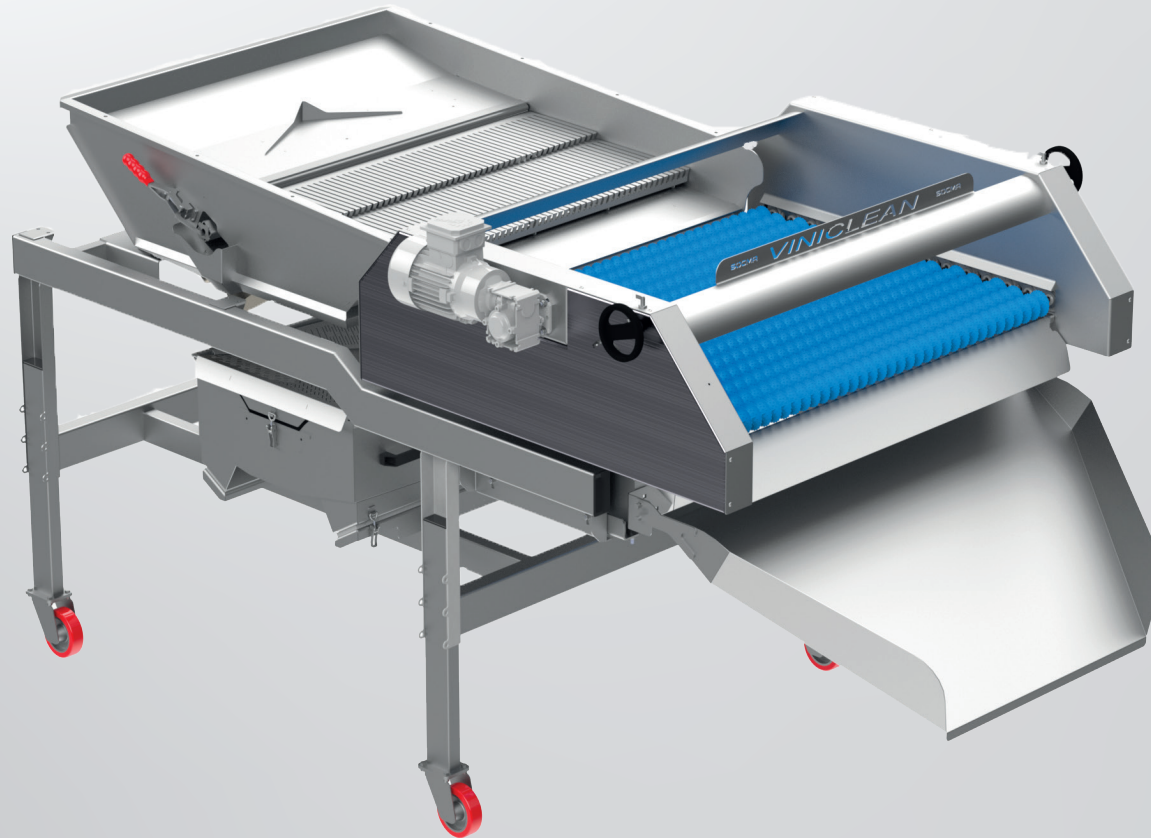


# VINICLEAN<sup>®</sup> VIBRATING HOPPER

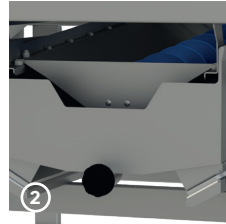
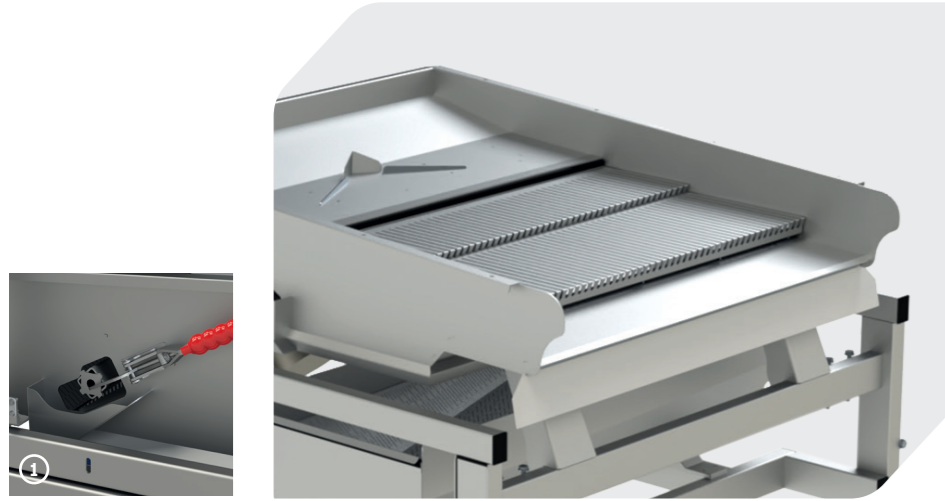
MANUFACTURED IN FRANCE



**SOCMA<sup>®</sup>**

**inox innovation**

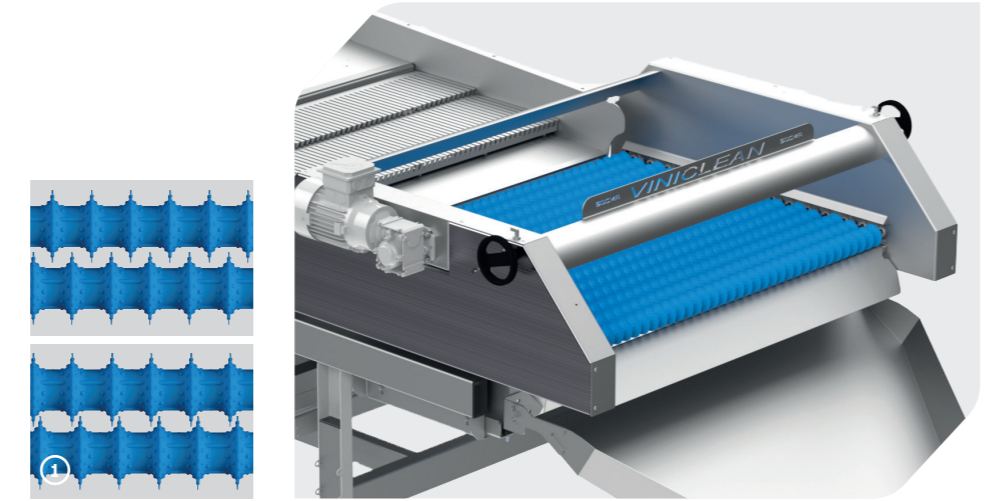
## THE VIBRATING HOPPER



### The principles of operation of the Viniclean® vibrating hopper

The vibrating hopper has several advantages. The first is to distribute the grapes evenly over the entire surface of its grid in order to effectively sift out the juice and small undesirable residues. The second is to direct the flow of material horizontally in order to facilitate and optimise the work of the viniclean rollers. This 1100 mm wide vibrating system is equipped with a grid that can be dismantled instantly and without the need for tools (1), making it possible to adapt the opening of the grid (3 mm, 5 mm or 7 mm) to the size of the grape berries to be treated or to the small waste to be eliminated (green berries, dry or atrophied berries, small snails). Under the grid is a basin, equipped with a 50 mm mason fitting, in which is placed a grid (or, as an option, an automatic waste evacuation screw) separating the solid waste from the liquid (2).

## VINICLEAN®



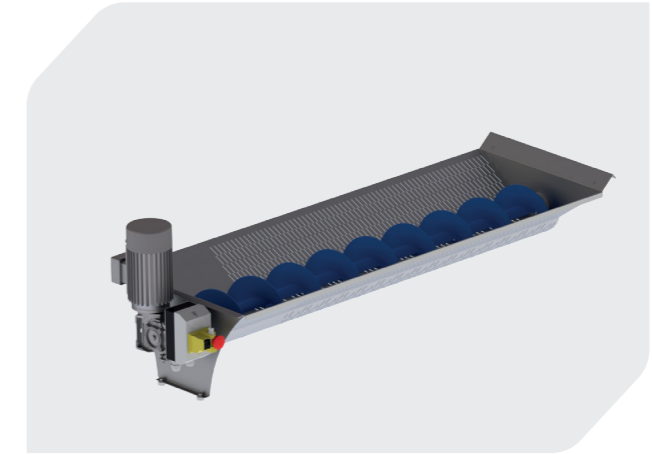
This 15-roller sorting tool, equipped with flexible plastic covers, with adjustable spacing on two axes, allows precise ejection of the plant and any other waste larger than the grape berry (stalks, stems, leaves, snails, pieces of stump, etc.). The contours and the flexible material of our sorting rollers have been specially designed by our engineering department for optimal plant grip without triturating the fruit. The instantaneously adjustable spacing of the rollers (1) combined with the possibility of lateral adjustment of the spacing of the contours (2) allows precise calibration adapted to all types of grape variety.

## OPTIONS FOR THE VINICLEAN® VIBRATING HOPPER



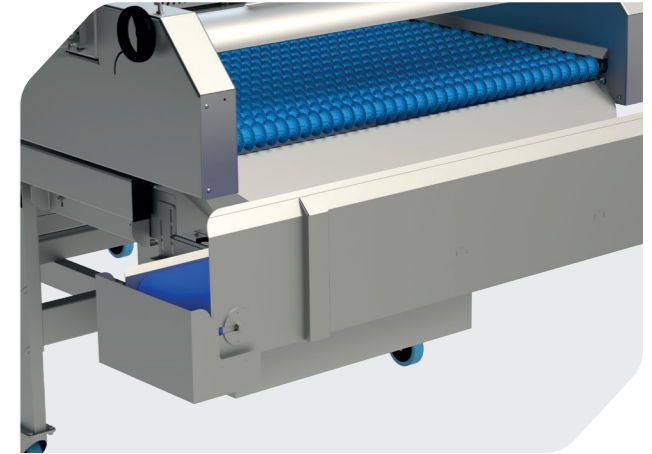
### STAINLESS STEEL GRID

Additional stainless steel vibrating hopper grid.  
 Available in 3 mm, 5 mm and 7 mm openings.



### HELICAL WASTE EVACUATION

Automatic waste evacuation screw located under the vibrating hopper grid. This option replaces the drip grid positioned above the juice tray which needs to be cleaned regularly.  
 Flexible worm screw with geared motor and electrical connection.  
 Perforated and microblasted stainless steel trough.



### WASTE EVACUATION BELT

The belt has two directions of rotation. The reversal of the direction of travel also allows a waste container to be positioned on either side of the evacuation belt so that the direction of rotation is reversed while the full container is emptied on one side and the other is filled on the opposite side.  
 This waste evacuation belt is equipped with a drum motor, a 300 mm wide chevron cleated belt and a belt release system for fast and accurate cleaning.

**SOCMA**<sup>®</sup>

ZA du Castellas  
599, avenue du Col de Chèvre  
11100 Montredon-des-Corbières  
France

+33 (0)4 68 41 50 30  
socma@socma.info

**socma.info**