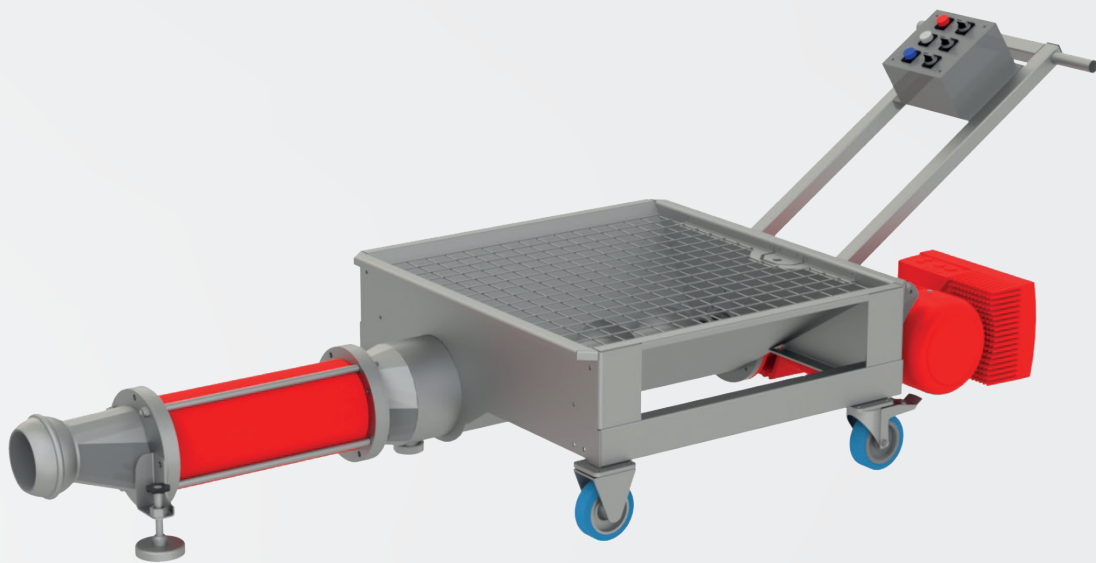


HELICAL ROTOR PUMP

VERSATILE AND GENTLE



COMPOSITION

- ▶ Chassis made of 304 stainless steel on rubber wheeled castors (2 fixed castors & 2 swivel castors with brakes).
- ▶ 4Kw geared motor with a 7.5Kw electronic variator.
- ▶ Adjustable rotation speed from 20 to 160rpm.
- ▶ Stainless steel electrical box.
- ▶ Stainless steel rotor and 90mm polymer stator.
- ▶ Stainless steel Archimedes screw.
- ▶ Asymmetrical stainless steel hopper (L: 800mm, W: 850mm, H: 400mm, capacity: 100L).
- ▶ Stainless steel oenological cones for connecting hopper/ stator and stator/spherical couplings.
- ▶ 40mm mason drainage tap.
- ▶ Tilting and reversible handling arm.
- ▶ 120mm male spherical coupling.
- ▶ Stabilisation stand.

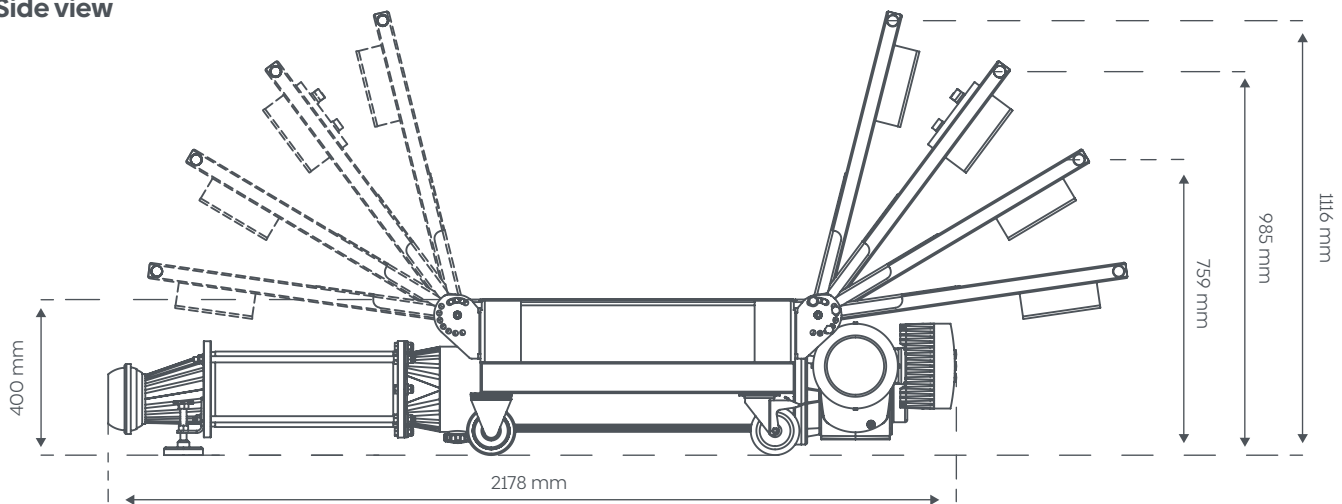
ADVANTAGES

- ▶ Its oenological spout limits trituration and grinding.
- ▶ Its reversible tilting handling arm.
- ▶ The height of the hopper facilitates devatting (400 mm).
- ▶ Microblasted finish.

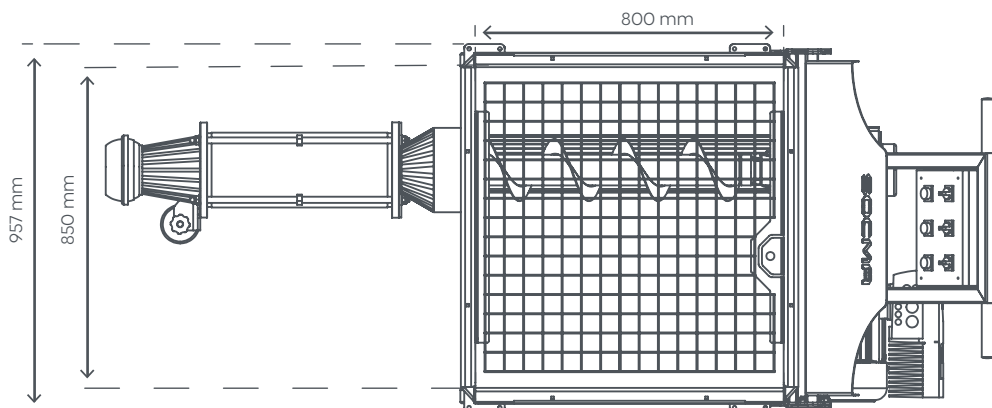
OPTIONAL EQUIPMENT

- ▶ Water level sensor
- ▶ Four-sided hopper extensions
- ▶ Available in heights of 100 mm, 300 mm or 500 mm

Side view



Top view



SOCMA®

ZA du Castellas
599, avenue du Col de Chèvre
11100 Montredon-des-Corbières

+33 (0)4 68 41 50 30
socma@socma.info
socma.info